

THE LOOPY LIBRARY



GEOGRAPHY

REFERENCE

50 STATES OF THE USA
KEN TUCKY

MISSOURI (SHOW ME STATE)

Missouri is situated in the Midwestern United States and became the 24th state to join the Union in 1821. The Missouri River crosses the state from west to east, with the north of the river consisting of mainly prairie land and the southern half mostly forested hills and low mountains. The Mississippi River forms the eastern border of Missouri.

MISSOURI
Capital - Jefferson City
Missouri has over 6,000 caves. That's why its known as the 'Cave State'.

1) Only one other state has borders with eight other states. Which one is it?
A) TEXAS
B) TENNESSEE
C) FLORIDA

2) Which is the smallest state in the USA in land area?
A) RHODE ISLAND
B) ALASKA
C) TEXAS

WHICH STATE HAS THE HIGHEST MOUNTAIN, IS IT OHIO, ALASKA OR NEVADA?



I CAN'T HEAR THE QUESTION, BECAUSE OF 'Z' SNORING! DO YOU KNOW THE ANSWER?



TALKING BIRDS
IVOR MACAW

ART

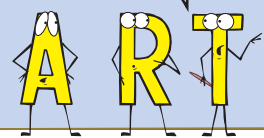
BORDER STATES

Missouri has borders with eight other states. One of these nine states below does not have a border with Missouri. Can you place the eight bordering states into the grid and leave the odd one out?

ARKANSAS • IOWA
TENNESSEE
ILLINOIS • KANSAS
KENTUCKY • TEXAS
OKLAHOMA
NEBRASKA

PIZZA ART
Which two of these eight pizzas are exactly the same?

I ASKED YOU TO PAINT ME SOME WORKS OF ART! WHY DID YOU PAINT ME PIZZAS?
I WAS HUNGRY!



1. PIZZA ART 2. PIZZA ART 3. PIZZA ART 4. PIZZA ART
5. PIZZA ART 6. PIZZA ART 7. PIZZA ART 8. PIZZA ART

Answers: Q&A 1) B. TENNESSEE 2) A. RHODE ISLAND. Highest Mountain B. MOUNT MCKINLEY, ALASKA. Border States Odd One Out TEXAS. Pizza Art 1 & 3 ARE IDENTICAL.