

GEOGRAPHY

REFERENCE

STATES OF THE USA  
ALABAMA

**MONTANA (TREASURE STATE)**  
Capital - Helena

MONTANA

Montana is the fourth largest state in the USA. It is divided into two main areas, the 'Great Plains' in the east and the Rocky Mountain region in the west. The Rockies consist of more than 50 mountain ranges.

Montana has borders with four other states; Idaho, Wyoming, North Dakota and South Dakota, with Canada bordering the north.

1) What is a Pronghorn?  
A) A FISH  
B) A MAMMAL  
C) A BIRD

2) What is a Coyote?  
A) WILD DOG  
B) WILD CAT  
C) WILD BIRD

3) What is an Elk?  
A) TYPE OF BEAR  
B) TYPE OF DEER  
C) TYPE OF SNAKE

FACTS ABOUT MAMMALS  
ANN T. LOPES

WILDLIFE

ART

SNEAKY SNAKES  
ANNA CONDA

**MONTANA WILDLIFE**

Here are just eight of the many animals that live in Montana. Can you find them in this grid?

BISON • ELK  
MOOSE • GRIZZLY BEAR  
RED FOX • PRONGHORN  
COYOTE • BOBCAT

The names can be found down, across or diagonal.

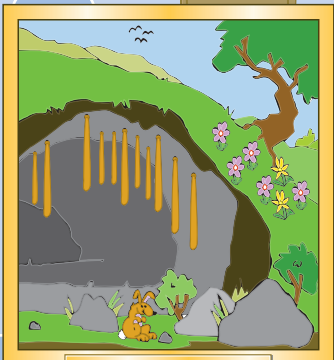
L	Y	P	V	N	O	Z	T	F	C	L	M
R	T	U	L	Y	D	E	F	S	O	G	L
P	R	O	N	G	H	O	R	N	Y	B	J
B	W	H	Q	P	K	M	U	T	O	O	V
T	I	J	Z	N	L	O	S	Q	T	B	K
U	O	S	B	D	F	O	T	W	E	C	S
J	H	X	O	S	M	S	J	Z	S	A	H
V	Y	K	T	N	K	E	T	M	C	T	V
P	G	R	I	Z	Z	L	Y	B	E	A	R
O	U	E	W	P	K	U	Z	R	F	Q	H
L	Q	V	L	G	R	E	D	F	O	X	L
Z	P	H	R	K	V	B	Z	W	H	V	K

I ASKED YOU TO PAINT ME A BAT IN A CAVE! BUT NOT THAT KIND OF BAT!

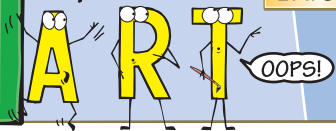


BATS IN A CAVE

Can you spot the eight differences between these two pictures?



BATS IN A CAVE



Answers: Q&A 1) B 2) A 3) B. Spot the Difference 1) TREES 2) BIRDS 3) KNOT IN TREE 4) FLOWER MISSING 5) BUSH 6) RABBIT 7) ROCK MISSING 8) NUMBER OF BATS